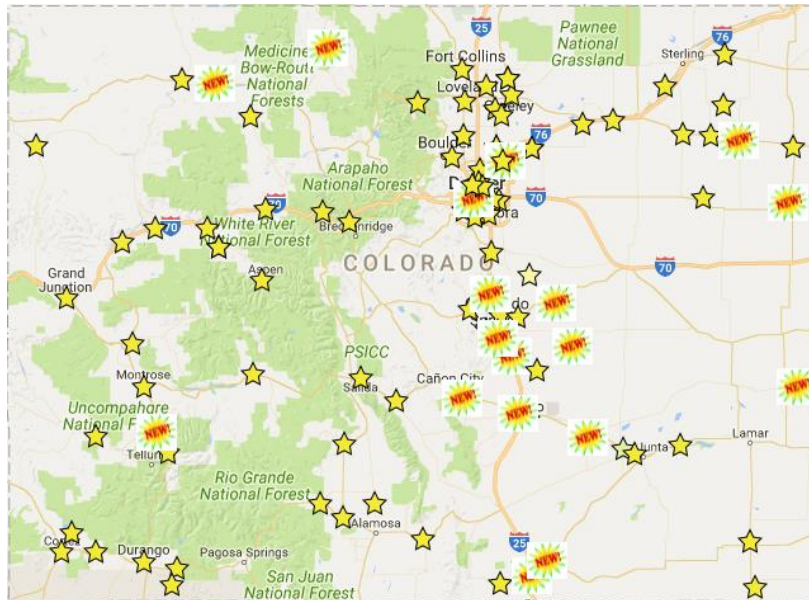


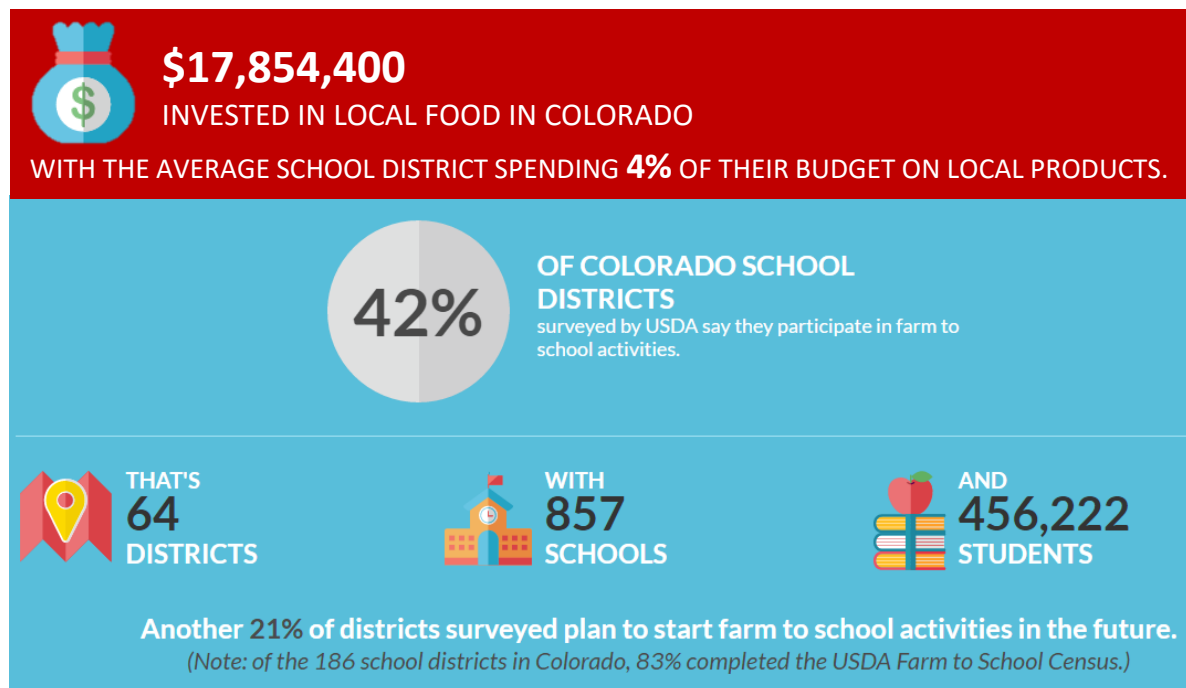
## Discussion question:

What incentives exist for CO schools/institutional food service to purchase from CO agricultural and food businesses? What are the implications of CO procurement on the local economy?



Colorado schools engaged in farm to school activities 2015

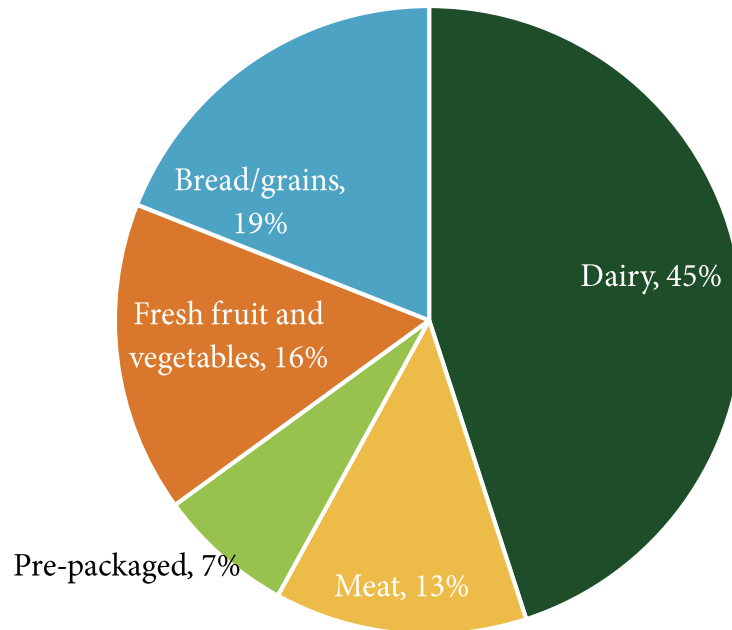
Source: Colorado Farm to School



Source: USDA, 2015, *Farm to School Census*

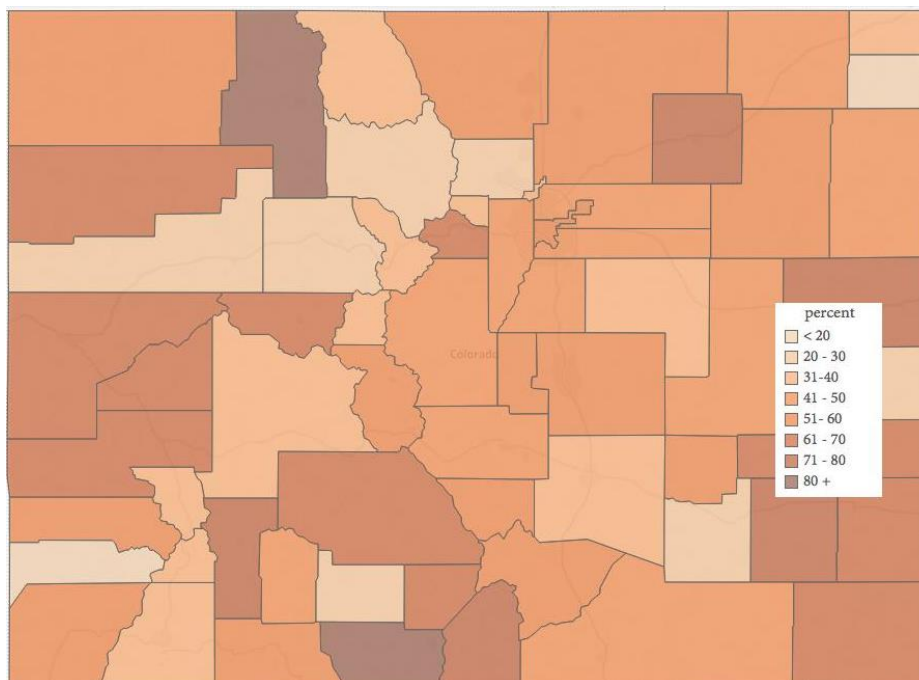
## Discussion question:

**What incentives exist for CO schools/institutional food service to purchase from CO agricultural and food businesses?**



### Distribution of total institutional demand for Colorado-Grown products by product type

Source: Gunter, 2011, *Local food distribution in Northern Colorado: Marketing and economic implications*



### Percent of students eligible for free and reduced-price lunch

Source: Colorado Department of Education presented on Colorado Food Systems Hub